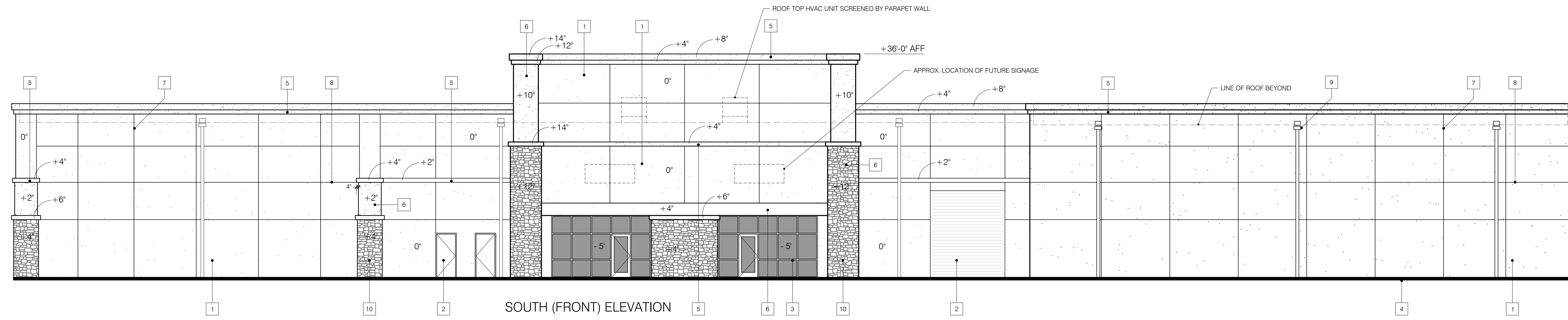
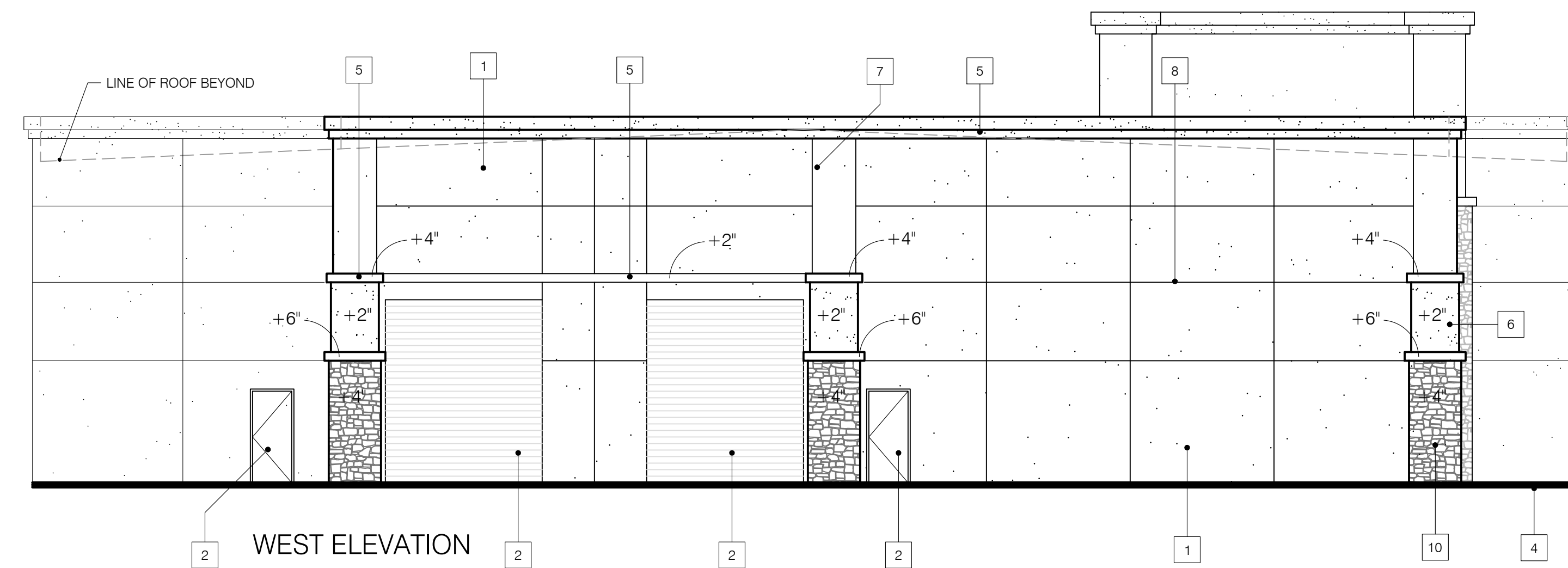


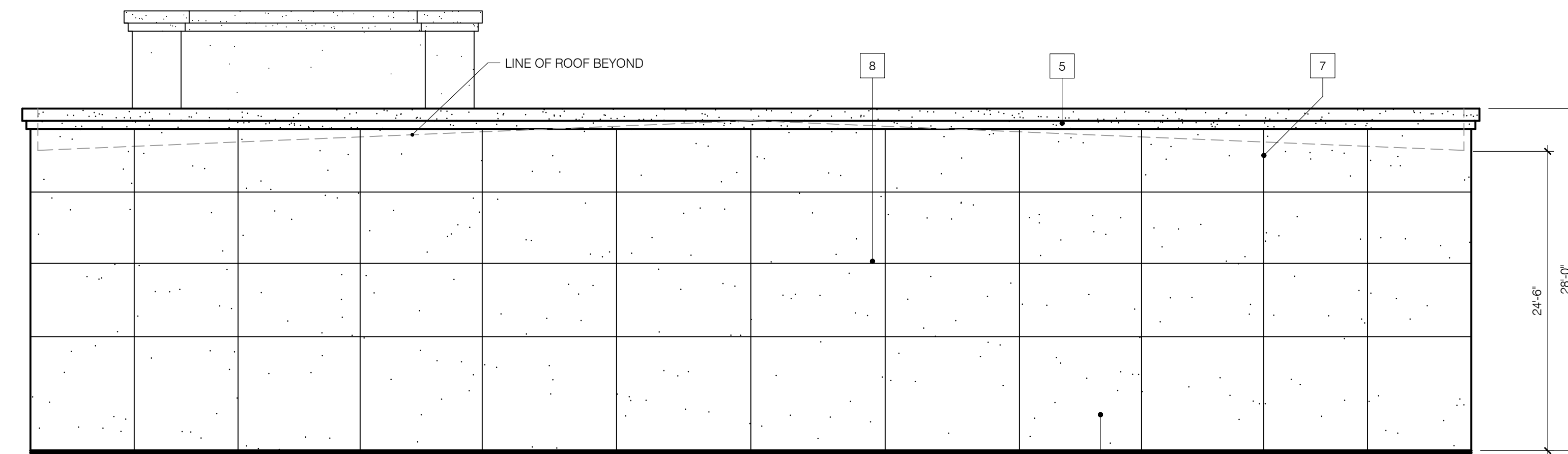
DC EXHIBIT C



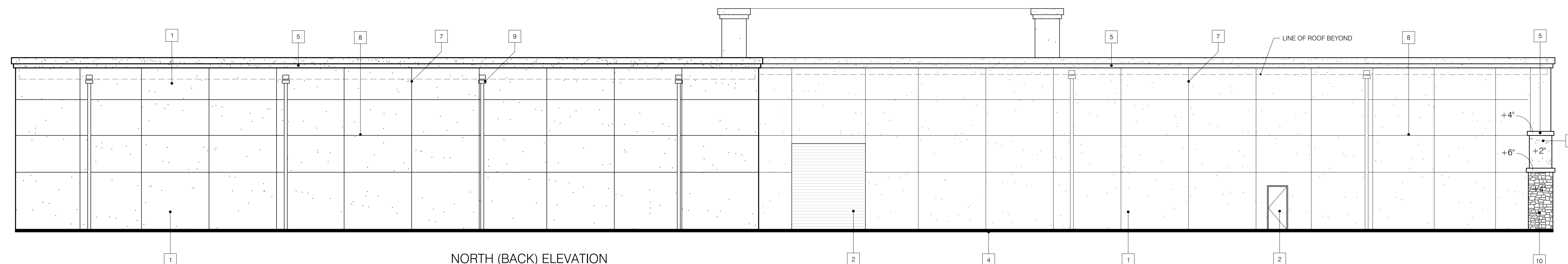
SOUTH (FRONT) ELEVATION



WEST ELEVATION



EAST ELEVATION



NORTH (BACK) ELEVATION

MATERIAL/FINISH NOTES

- 1 PAINTED CONCRETE PANEL W/ SHERWIN WILLIAMS (SW) LOKON ACRYLIC COATING, MEDIUM TEXTURE
- 2 HOLLOW METAL DOOR ASSEMBLY PAINTED W/ SW ACRYLIC SEMI-GLOSS PAINT
- 3 CRL US ALUMINUM 2'X4.5' CENTER PUNCH DUAL GLAZED DARK BRONZE STOREFRONT FRAME W/ PPG SOLAR BRONZE GLAZING
- 4 GRAPHIC LINE REPRESENTS FINISH GRADE
- 5 PAINTED CEMENT PLASTER TRIM W/ SW ACRYLIC PAINT, LIGHT SAND FINISH
- 6 PAINTED CEMENT PLASTER POP-OUT W/ SW ACRYLIC PAINT, HEAVY TEXTURE FINISH
- 7 GRAPHIC LINE REPRESENTS A 3/4" V SHAPED PANEL JOINT - TYP. WHERE SHOWN, PAINTED W/ ADJACENT COLOR TO CENTER OF JOINT
- 8 GRAPHIC LINE REPRESENTS A 3/4" V SHAPED REVEAL - TYP. WHERE SHOWN, PAINTED W/ ADJACENT COLOR TO CENTER OF REVEAL
- 9 SCUPPER W/ DOWNSPOUT - TYPICAL WHERE SHOWN, PAINTED TO MATCH ADJ. COLOR
- 10 ADHERED STONE VENEER BY CORONADO STONE, IDAHO DRYSTACK CARMEL MOUNTAIN

JON DELLING, Architect C12826
11512 MIKADO COURT
AUBURN, CA 95602
(630) 613-6277 voice
jondelling@gmail.com email

ARCHITECT:

NEFF DESIGN & DRAFTING, INC.
3460 COBBLESTONE DRIVE
ROCKLIN, CA 95765
(916) 865-7737 voice
john@neffid.com email

CONSULTANT:

These drawings are the sole property of Jon Delling, Architect and Neff Design & Drafting. Any reproduction or reuse in whole or in part without written approval is strictly forbidden.

NEW WAREHOUSE FOR:
SAM'S AIRPACK PLUS, INC.
7100 GALLIEE ROAD
ROSEVILLE, CALIFORNIA 95678

PROJ. NAME:
SHEET TITLE:

EXTERIOR ELEVATIONS

REVISIONS:

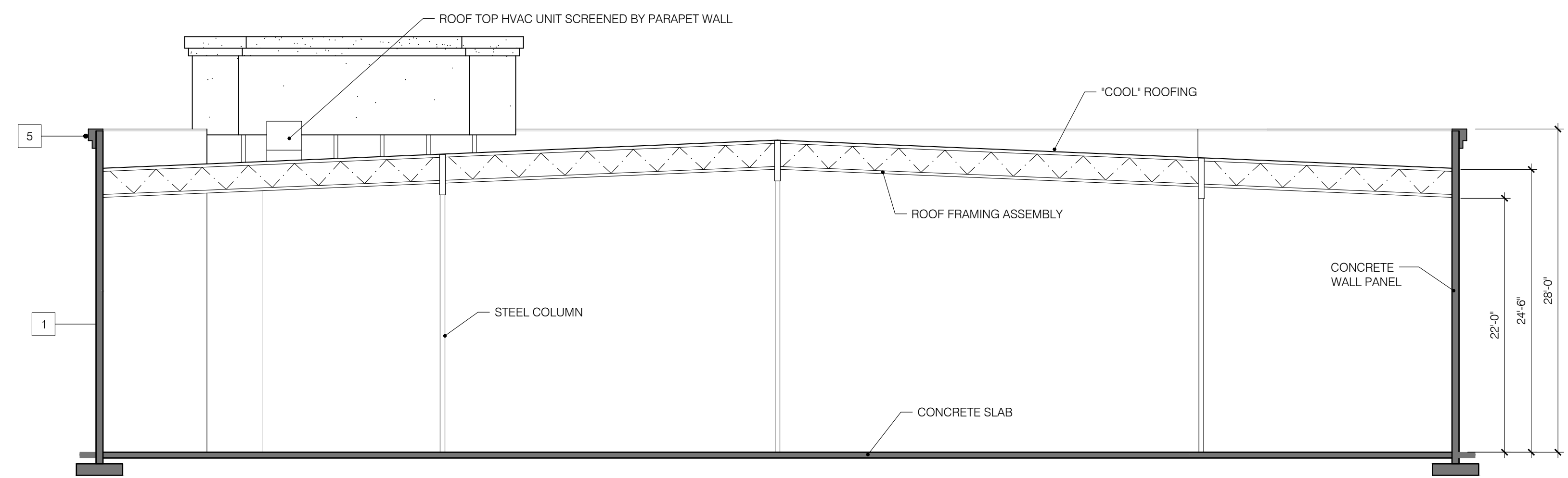
PROJ. NO.: 2022-0113
DATE: JULY 7, 2022
SCALE: AS NOTED
FILE: A4.0_EXTELEVS_7100.DWG
SHEET NO.:

A4.0

	26	21	16		11
	27	22	17		12

SHEET NOTES

- 1 CONCRETE PANEL - SMOOTH FINISH, PAINT
- 2 DOOR ASSEMBLY - PAINT
- 3 ALUMINUM STOREFRONT - DARK BRONZE W/ BRONZE GLAZING
- 4 APPROX. FINISH GRADE
- 5 CEMENT PLASTER TRIM - SAND FINISH, PAINT
- 6 CEMENT PLASTER PILASTER/POP-OUT - SAND FINISH, PAINT
- 7 PANEL JOINT - TYP. WHERE SHOWN
- 8 REVEAL - PAINT
- 9 SCUPPER W/ DOWNSPOUT - TYPICAL WHERE SHOWN, PAINT
- 10 ADHERED STONE VENEER

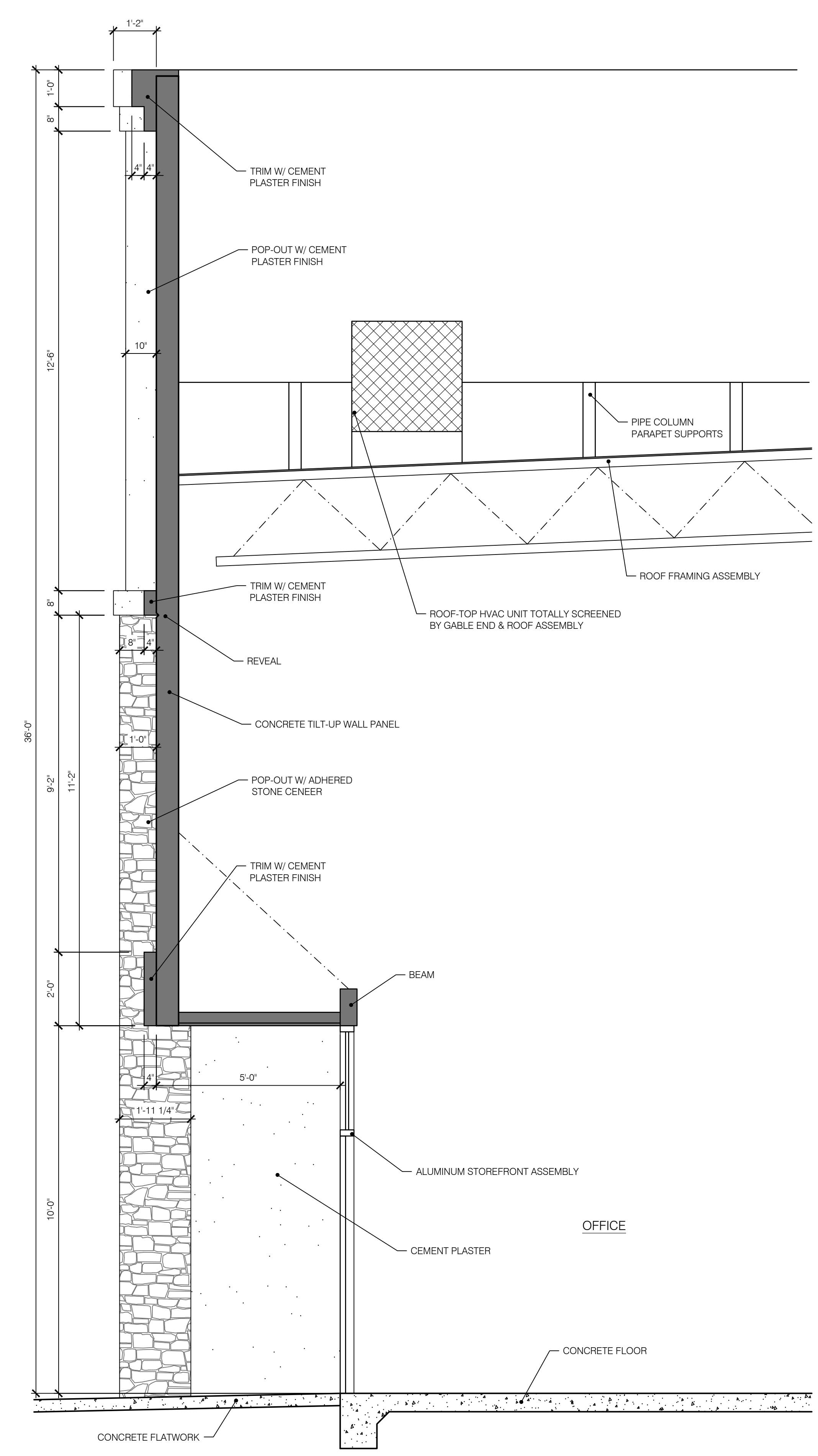
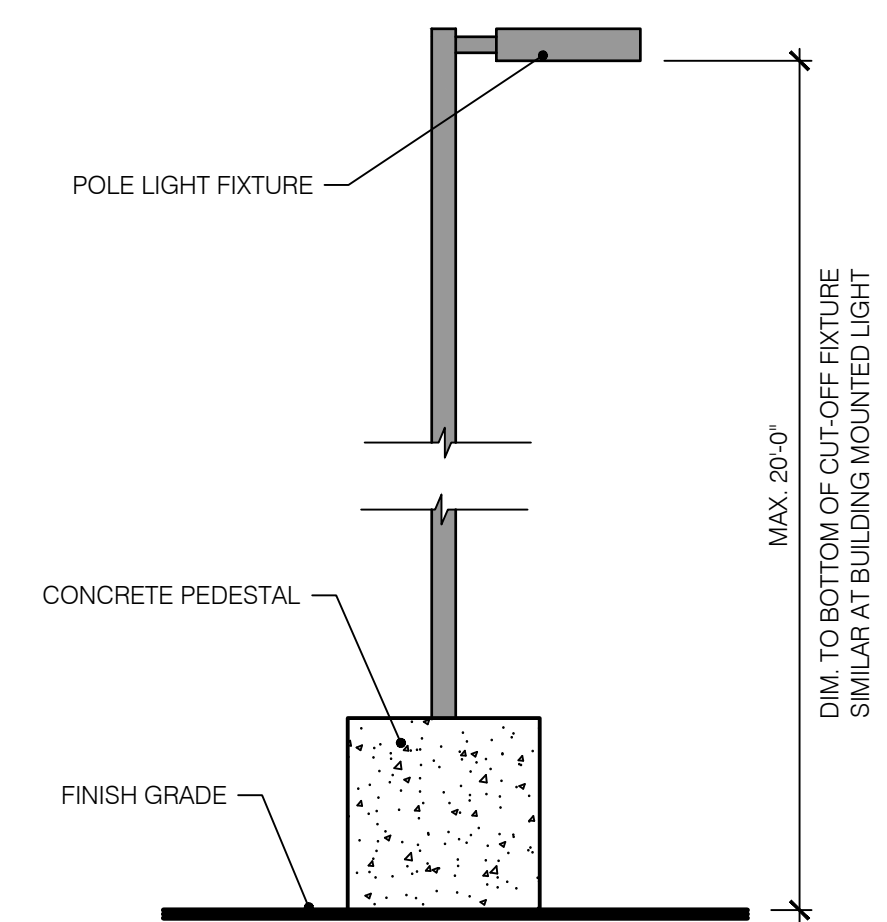


BUILDING SECTION

1/4" = 1'-0"

14

	50	25	20	POLE LIGHT	1/2" = 1'-0"
					15



SECTION AT MAIN ENTRY

1/2" = 1'-0"

5

JON DELLING, Architect C12826
 11512 MIKADO COURT
 AUBURN, CA 95602
 (630) 613-6277 voice
 jondelling@gmail.com email

NEFF DESIGN & DRAFTING, INC.
 3460 COBBLESTONE DRIVE
 ROCKLIN, CA 95765
 (916) 865-7737 voice
 john@neffdd.com email

These drawings are the sole property of Jon Delling, Architect and Neff Design & Drafting. Any reproduction or reuse in whole or in part without written approval is strictly forbidden.

NEW WAREHOUSE FOR:
SAM'S AIRPACK PLUS, INC.
 7100 GALILEE ROAD
 ROSEVILLE, CALIFORNIA 95678

PROJ. NAME:
 SHEET TITLE:
SECTIONS

REVISIONS:

PROJ. NO.: 2022-0113
 DATE: JULY 7, 2022
 SCALE: AS NOTED
 FILE: A6.0_SECTIONS_7100.DWG
 SHEET NO.:

A6.0